

ACOUSTIC PERFORMANCE

IMPACT L_nTW = 50dB

AIRBORNE D_nTW = 58dB

AIRBORNE D_nTW + C_{tr} dB = 53dB

RESULTS BASED ON A RECOMMENDED SYSTEM INCORPORATING HUSH CRADLES OVER EXISTING FLOORBOARDS WITH SUITABLE CEILING TREATMENT AND NO FLANKING PATHS.

PRODUCT DATA

CAN BE LAID OVER CONCRETE OR TIMBER.

COMPRISES OF A 60mm DEEP x 90mm DIAMETER GLASS FILLED NYLON CRADLE WITH 'O' SUPPORT RING BONDED TO THE 10mm HUSHFELT™ RESILIENT LAYER.

OVERALL CRADLE DIMENSIONS 90mm DIAMETER x 70mm HIGH.

OVERALL ADJUSTMENT 15mm - 60mm ABOVE STRUCTURAL BASE.

CRADLE BASE THICKNESS 15mm.

FEATURES

UNIQUE PATENTED DESIGN.

IDEAL FOR UNEVEN FLOOR SURFACES - NO FIDDLY PACKERS REQUIRED, LABOUR COSTS MUCH REDUCED.

BUILDING REGULATIONS PART E (ENGLAND & WALES), SECTION 5 (SCOTLAND) AND PART G (NORTHERN IRELAND).

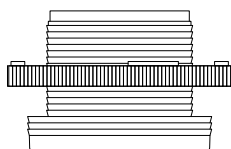
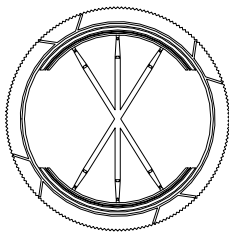
ROBUST DETAILS FFT2 COMPLIANT FOR FLOOR STRUCTURES EFC-1, EFC-2, EFC-7 AND EFS-1.

RAPID INSTALLATION TIME.

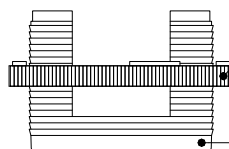
CAN BE TILED OVER IF USED WITH PERMALAYER AND A FLEXIBLE ADHESIVE.

CAN BE USED AS PART OF A CODE FOR SUSTAINABLE HOMES COMPLIANT DEVELOPMENT.

PLAN VIEW



FRONT VIEW



SIDE VIEW

INFINITELY ADJUSTABLE
BATTEN SUPPORT

HUSHFELT™
RESILIENT LAYER 10mm

HUSH (UK) LTD
HUSH CRADLE